



CITY OF PLEASANT HILL  
BUILDING DEPARTMENT

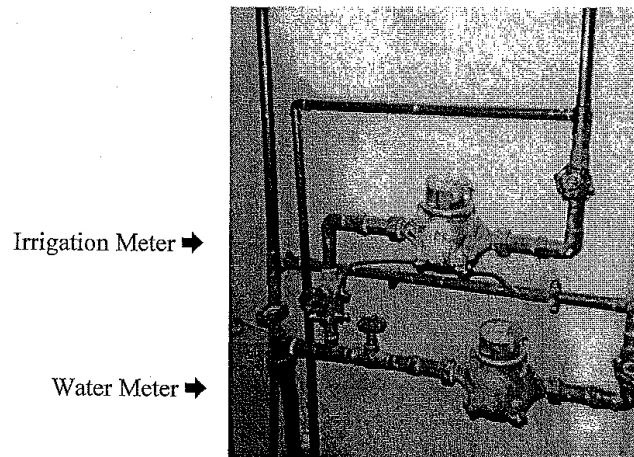
## IRRIGATION METER INFORMATION

All new construction, residential and commercial is required to have two water meters. The primary meter measures internal consumption of water and sewer and the second meter, commonly referred to as an irrigation meter (or agriculture meter or secondary meter) measures consumption of water only. All water used for irrigation purposes, measured through an irrigation meter and not discharged into the sewer system, is exempt from the sewer service charges.

Irrigation (water only) meters are meters that have not had the water previously registered by another meter. The amount of water measured by the irrigation meter is added to the monthly water bill but is not charged sewer rates or an additional minimum monthly charge.

Irrigation meters are to be installed on a tee, off the inlet service line right after the inlet valve. This is commonly referred to as an 'add on' system - NOT a deduct system. Irrigation meter setting needs to be for a 1" meter.

See diagram



All installation and repairs within The City of Pleasant Hill shall be permitted and performed by a State of Iowa Licensed Master A Plumber. Permits and inspections are required by City of Pleasant Hill Building Department, 515-309-9461. Water meters are obtained from Des Moines Water Works, 515-283-8700.